



Display Mount

Chassis Range



kramer | ab. Ashton Bentley.

Introduction



Mounting displays (and equipment) on walls provides challenges: running cables, provision of power, reinforcement and other building work.

This takes time and money.

Similar amount of work/cost is required when the system is decommissioned or moved.

To remove these challenges, we designed the Ashton Bentley Floor-to-Wall Display Mount Chassis.

A modular mounting solution for single/dual displays from 43" to 105" that also provides integral enclosed space for equipment and cabling, replacing the traditional credenza or equipment rack.

Why use a chassis?

- Minimal building work. Just tether the chassis to the wall. The weight of the display is on the floor, not the wall.
- No building work. Need to place the chassis in front of a glass wall, or in free space? Add our Freestanding Base..
- Mobile. Need a system that is easily movable? Add the mobile base.
- Simple to get it right. Displays mounted at the same height, square and level every time.
- No special cabling requirements. Cables can be run from the floor or wall.
- Self-contained. Equipment storage within the chassis removing the requirement for an equipment rack in a cupboard or credenza.
- Quick to install. Assembled in minutes. Simple to relocate.
- Flexible. Single or dual display easily accommodated.
- Display agnostic. Mount almost any size of display from all manufacturers.
- VC Hardware agnostic. Fixings available for almost any Videobar, Camera and Codec/NUC





Designed for AV

Single / Dual Displays



Single Display - Video/Content (PIP)

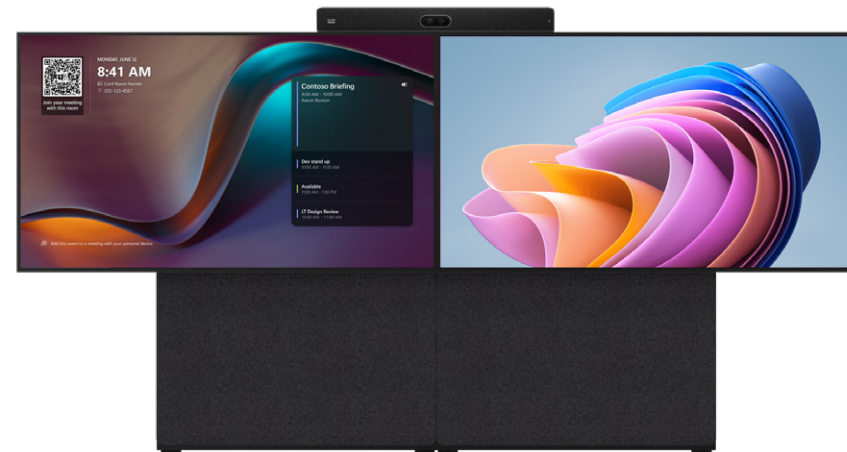
Cost-effective, simple, and excellent for smaller spaces.

Minimizes distractions by keeping the focus on one display, however does provide limited space for multitasking.

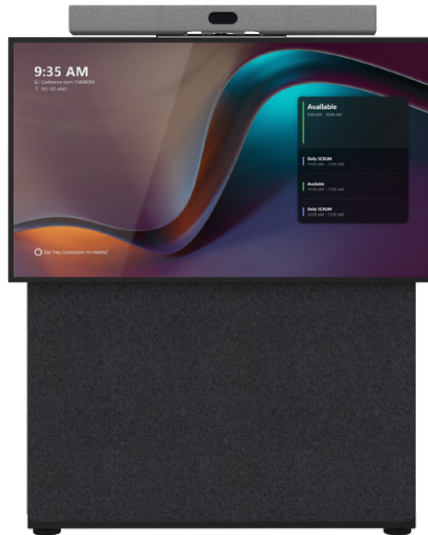


Dual Display - Video & Content

Ideal for collaborative, data-heavy sessions where incoming video and data are displayed on individual displays, Ideal for medium-to-large conference rooms,



Display Heights



Standard height

Provides for camera above the display



Tall height

Provides for camera below the display

Make it your Own



Your choice of Display

Designed to accommodate all leading display brands, including those listed below.

Simple fixing method makes installation a breeze.

Also compatible with most all-in-one 'boards' from manufacturers such as Neat and Cisco.



Your choice of VC hardware

Videobars and cameras from most leading VC manufacturers, including those listed above, can be seamlessly mounted below displays on the Mobile.



Your choice of Video Conferencing Platform



SAMSUNG



SONY

NEC

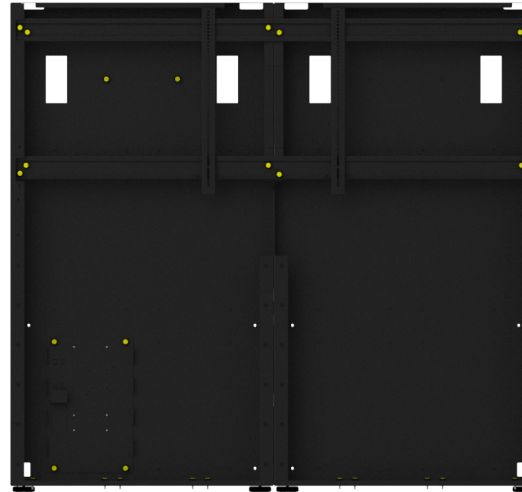
neat.



Large Format Displays



Camera Above



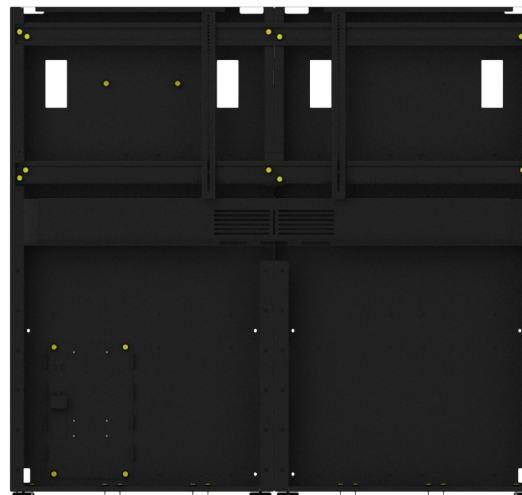
Versatile

Mount 86", 98" & 105" Displays
(Also used for some dual configurations of 55", 65" & 75")

Adjustable display height

Provides for camera above and below the Display

Camera Below



Power Distribution



Internal Power Distribution

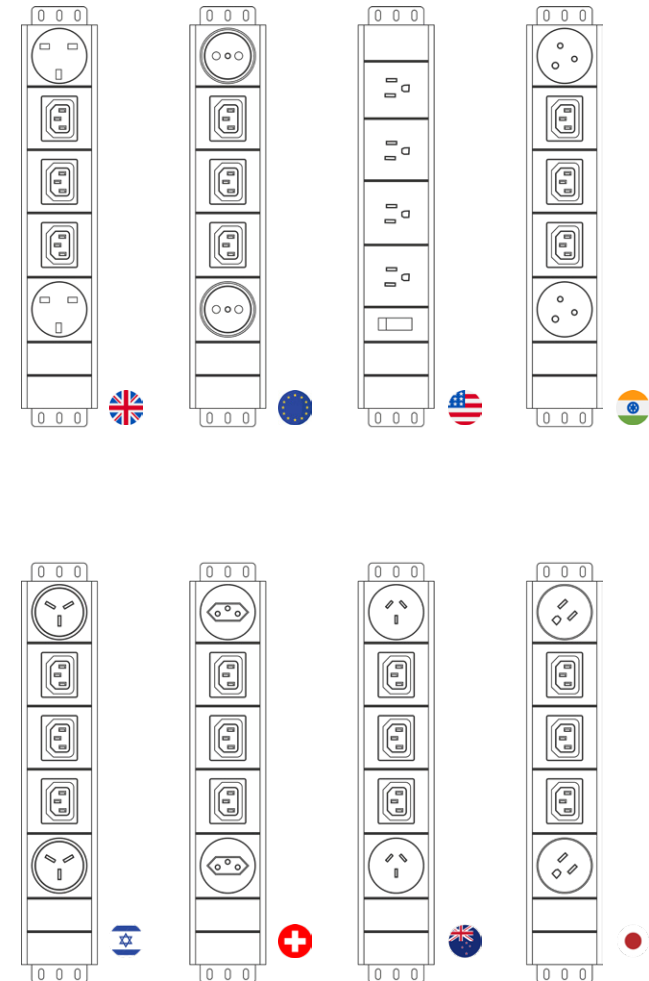
The power distribution block is conveniently located inside the equipment space, and provides power for all hardware mounted inside, and on, the Display Mount.



Regional Power Distribution Block

3 x IEC power outlets
2 x region specific power outlets

UK | USA | EU | INDIA | ISRAEL | SWITZERLAND | AUSTRALIA/NZ | JAPAN



Features



↑ Tool-less Construction
Hand assemble in minutes.



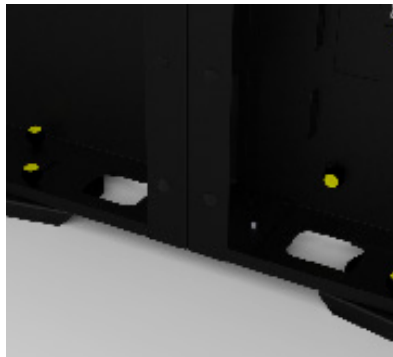
↑ Thermal Ventilation
Open slots allow for natural thermal ventilation.



↑ Adjustable Feet
Overcome uneven floors.



↑ Clean rear panel
No cables or access panels. Install in front of glass walls or in free space.



↑ Cable Access
Bring cables in from the back or below.



↑ PSU Bracket
Bracket shelf for camera/
Videobar PSU.

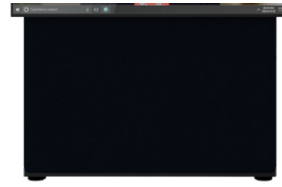


↑ 2U Depth
Space within the chassis for equipment.

Cover Colour Options



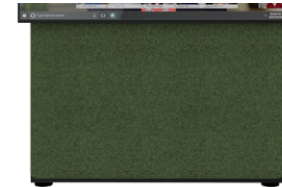
1. Charcoal grey (Standard)



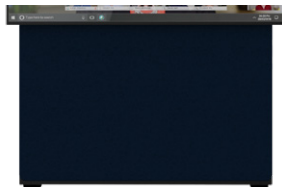
2. Black



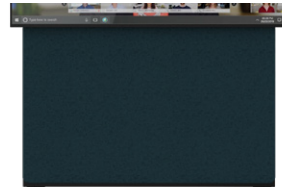
3. White



4. Sage



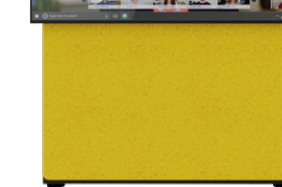
4. Nocturn



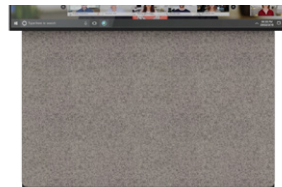
5. Eden



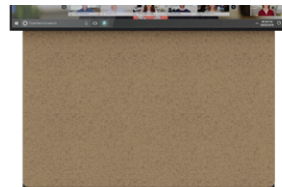
6. Slate



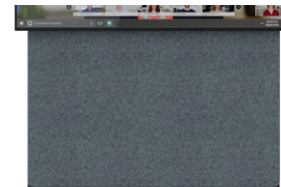
7. Yellow



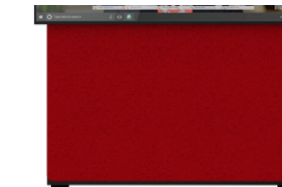
7. Natura



8. Sand



9. Misty Dew



10. Red



11. Neptune



12. Clouds



13. Oyster



Chassis Bases

Floor To Wall Fixing



Wall Fixing

Supplied as standard.

These brackets anchor the Chassis to the wall. The weight of the chassis and display remains down on the floor, not the wall.



The adjustable brackets allows the Chassis to be located slightly away from the wall when skirting boards prevent flush fixing.

Freestanding Base

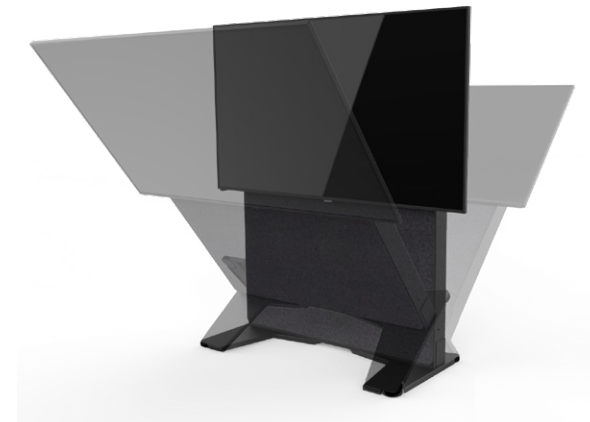


No building work

Do you require the Chassis to be installed:

- In front of a glass wall or in free space?
- In a non-permanent location?
- In a listed building where no building work is permitted?

Simply secure the optional Freestanding Base to the standard Floor-to-Wall chassis with the supplied knobs.



Tip/Tilt Compliant

The Freestanding Base is secure and does not allow the Chassis to tip over under normal conditions.

Floor Fixing Base



Fixing systems securely to floors

When you want to fix the system directly to the floor, use our Floor Fixing Base.

Camera Placement



Camera Placement



Correct camera placement is critical to deliver a natural and engaging collaborative experience. We have done the hard work and removed the time-consuming decision making process to get the camera in the right location.

Options for camera above and below for all display sizes and applications.

A range of mounting brackets for all leading camera and Videobars makes the fixing of these simple and secure.

Camera Above



Videobar Brackets

A versatile range of brackets designed to securely attach most videobars to our Display Mount, regardless of display size.

Camera / PTZ Bracket

Designed to securely attach, and support, most camera/PTZ devices above the display

VC hardware

Videobars and cameras from most leading VC manufacturers, including those listed here, can be seamlessly mounted above, or below, displays.

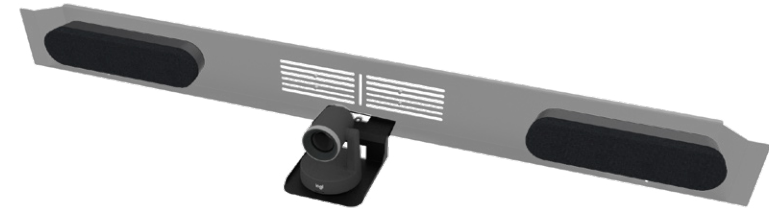


Camera Below



Camera Tray

Fits into the Display Mount which then provides a recessed mount for most Videobars.



PTZ Bracket & Speakers

We can accommodate some speakers within the Camera Tray. Please enquire for details.

Brackets for Camera Tray Accessories



PTZ Camera

Designed to securely attach and support most Camera/PTZ devices to our Display Mount, no matter the size of display.



Dual PTZ Camera

Secure and stable mount for multi camera applications



Poly E70 Camera

Mount optimised for the unique shape of the Poly E70 camera.



Touch Panel Shelf

Designed to secure most Touch Panels and provide convenient access.



Laptop Shelf

Suitable for laptops up to 15". Positioned not to obstruct content on the display.



Equipment Storage

Concealed Equipment Space



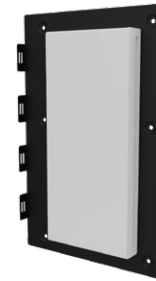
Beneath the display is a concealed space for AV/IT equipment, with a range of optional mounting plates and brackets.

Designed for performance and convenience, installation and maintenance are carried out from the front by simply removing the magnetic acoustic cover.



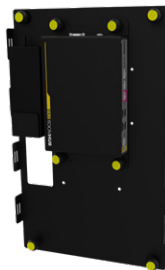
VESA Bracket Kit

For 3rd party products. Cable tie fixing points.



Cisco Equipment Bracket

Designed for Cisco EQ and other products.



AB Equipment Bracket

For DX2 Room Hub & BX USB-C Breakout Hub. Has shelf to hold PSU.

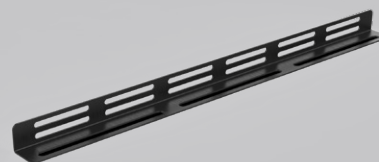


Rack Mount Brackets

1RU/2RU bracket.

Custom Mount Brackets

We can design brackets for most products that will fit inside the chassis. Please let us know what you require.



Cable Lacing Bars

For better wiring runs, and secure connections to equipment.



Contoso Weekly Project Briefing

10:00 AM - 11:00 AM
Danaei, Mandira
Meeting ID: 123 456 7890

Design for the July promotional splash page. Could you make those edits before our Wednesday client sync?

Charlotte de Crum 11:23 AM
Out today for family time! @Cortana, Send me any follow up items.

Babek Shamas 11:23 AM
Can you guys please send me the options that we are proposing to the client tomorrow?

Charlotte de Crum 11:23 AM
Danaei, Daichi mentioned that the client had some changes to our design for the July promotional splash page. Could you make those edits before our Wednesday client sync?

Chassis Range

Camera Above Chassis Range



Single Display

1x 55/65/75 Chassis



AB One55



AB One65



AB One75

Dual Display

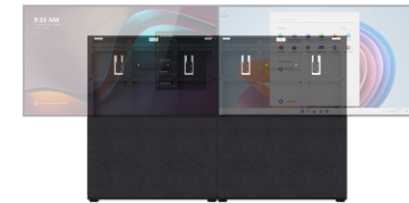
2x 55/65/75 Chassis



AB Two55



AB Two65



AB Two75

Single Display

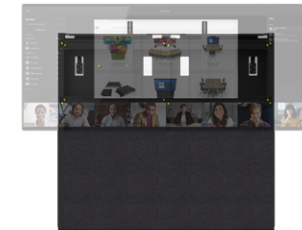
1x LUC Chassis



LUC One86



LUC One98



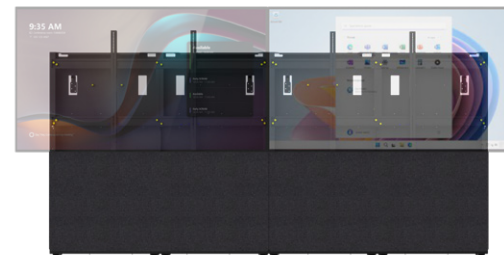
LUC One105

Dual Display

1x LUC Chassis



LUC Two 86



LUC Two 98

Camera Below Chassis Range



Single Display

1x 55/65/75 Chassis



AB One 55



AB One 65



AB One 75

Dual Display

1x 86/98/105 Chassis



LUC Two 55



LUC Two 65



LUC Two 75

Single Display

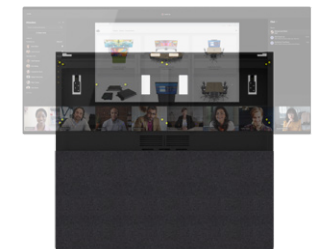
1x 86/98/105 Chassis



LUC One 86



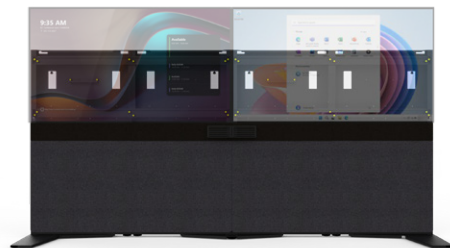
LUC One 98



LUC One 105

Dual Display

2x 86/98/105 Chassis



LUC Two 86



LUC Two 98



Ashton Bentley
23 Schooner Court
Crossways Business Park
Dartford
DA2 6NW
United Kingdom

t: +44 (0)207 100 1200
e: [:ab_spaces@kramerav.com](mailto:ab_spaces@kramerav.com)
w: www.ashtonbentley.com

Ashton Bentley started 15 years ago with a small group of like-minded people who believed meeting room AV could, and should, be simpler.

What once felt like a bold idea is now becoming the norm, with industry heavy weights endorsing and promoting our (we are not biased) excellent products!

It hasn't always been a smooth ride, but it's been a fun one—and it turns out we weren't as mad as we first thought.

Much more to come!