



Mobile

AV on the Move



kramer | ab. Ashton Bentley.



Enterprise Collaboration. Anywhere.

The modern workplace is fluid. Teams move. Spaces change.

The Mobile extends enterprise-grade collaboration beyond fixed meeting rooms, delivering high-performance AV wherever it's needed, without compromising standards or user experience.

From video conferencing to presentations and agile breakout sessions, it provides a premium meeting experience without the complexity or permanence of traditional AV installations.

Deploy as a standalone solution or as part of a fully integrated Ashton Bentley ecosystem, ensuring consistency across your collaboration estate.

Not all mobile AV units are created equal.

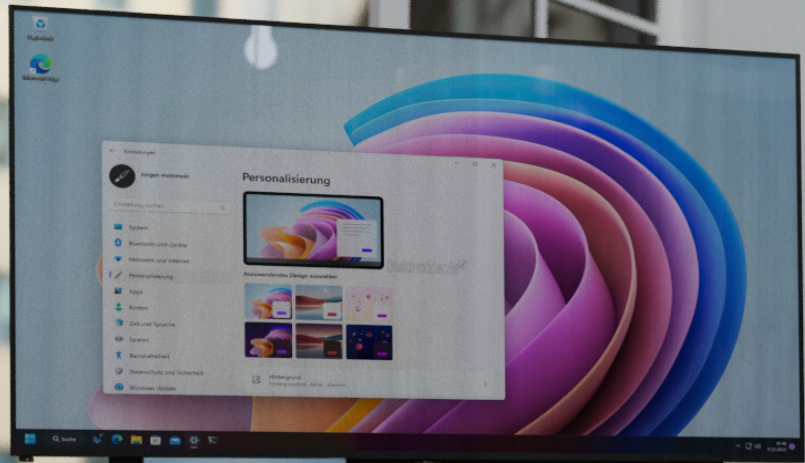
The Mobile combines effortless portability with advanced versatility, elevating it far beyond conventional mobile carts/trolleys.

Designed for seamless integration with your preferred display and VC platform, it supports scalable, enterprise-ready deployment.

Built on the same design-led ethos as our room systems, it's purpose-built to perform, and designed to impress.

Discover the features that set The Mobile apart.

Roll in. Connect. Collaborate.



Design



Simple Connections



Connectivity

Rear mounted Connection Box to make connectivity simple and safe.

Neutrik sockets for:

- 2 x RJ54 for pass-through network
- 1 x IEC for power
- 1 x Spare

Power Distribution



Internal Power Distribution

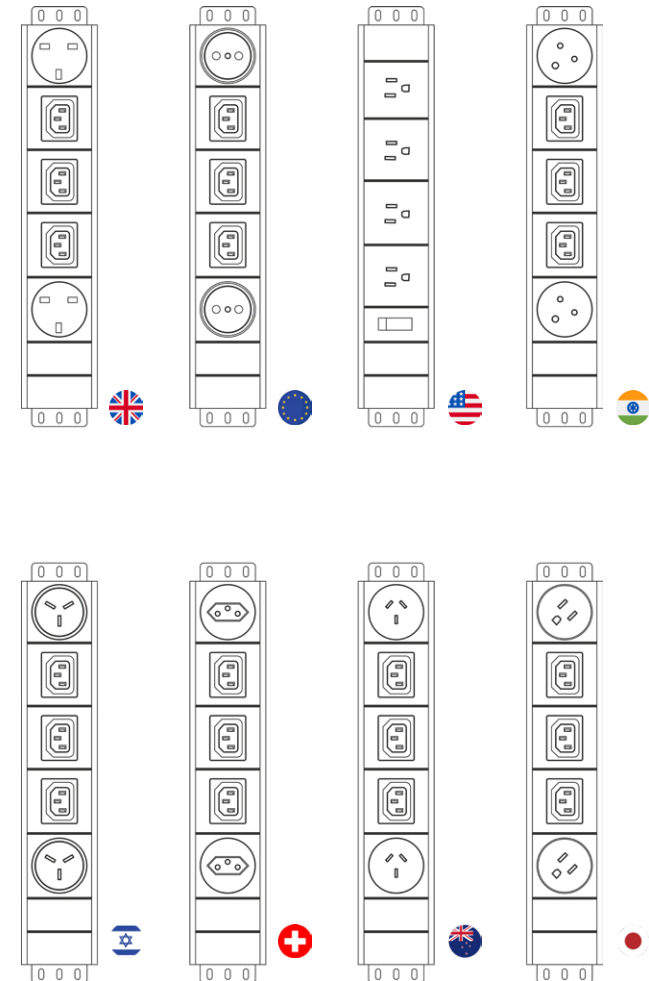
The power distribution block is conveniently located inside the equipment space, and provides power for all hardware mounted inside, and on, the Display Mount.



Regional Power Distribution Block

3 x IEC power outlets
2 x region specific power outlets

UK | USA | EU | INDIA | ISRAEL | SWITZERLAND | AUSTRALIA/NZ | JAPAN



Concealed Equipment Space



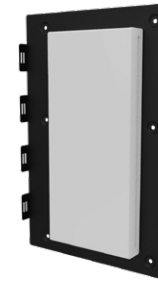
Beneath the display is a concealed space for AV/IT equipment, with a range of optional mounting plates and brackets.

Designed for performance and convenience, installation and maintenance are carried out from the front by simply removing the magnetic acoustic cover.



VESA Bracket Kit

For 3rd party products. Cable tie fixing points.



Cisco Equipment Bracket

Designed for Cisco EQ and other products.



AB Equipment Bracket

For DX2 Room Hub & BX USB-C Breakout Hub.
Has shelf to hold PSU.

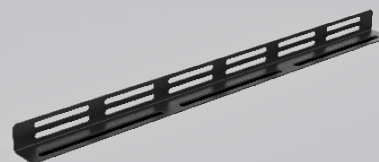


Rack Mount Brackets

1RU/2RU bracket.

Custom Mount Brackets

We can design brackets for most products that will fit inside the chassis. Please let us know what you require.



Cable Lacing Bars

For better wiring runs, and secure connections to equipment.

Large Format Displays



Support for Large Format Displays

Unlike some other carts/trolleys, the Ashton Bentley Mobile can accommodate displays up to 105".



Videobar & Camera Integration



Camera Above



Videobar Brackets

A versatile range of brackets designed to securely attach most videobars to our Display Mount, regardless of display size.

Camera / PTZ Bracket

Designed to securely attach, and support, most camera/PTZ devices above the display

VC hardware

Videobars and cameras from most leading VC manufacturers, including those listed here, can be seamlessly mounted above, or below, displays.

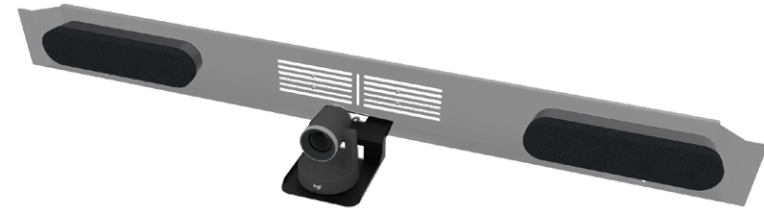


Camera Below



Camera Tray

Fits into the Display Mount which then provides a recessed mount for most Videobars.



PTZ Bracket & Speakers

We can accommodate some speakers within the Camera Tray. Please enquire for details.

Brackets for Camera Tray Accessories



PTZ Camera

Designed to securely attach and support most Camera/PTZ devices to our Display Mount, no matter the size of display.



Dual PTZ Camera

Secure and stable mount for multi camera applications



Poly E70 Camera

Mount optimised for the unique shape of the Poly E70 camera.



Touch Panel Shelf

Designed to secure most Touch Panels and provide convenient access.



Laptop Shelf

Suitable for laptops up to 15". Positioned not to obstruct content on the display.



Make it your Own



Your choice of Display

Designed to accommodate all leading display brands, including those listed below.

Simple fixing method makes installation a breeze.

Also compatible with most all-in-one 'boards' from manufacturers such as Neat and Cisco.



Your choice of VC hardware

Videobars and cameras from most leading VC manufacturers, including those listed below, can be seamlessly mounted above or below displays on the Mobile.



Your choice of Video Conferencing Platform



SAMSUNG



SONY

NEC

neat.



Make it your Own



The front covers beneath the display, along with optional rear panels, are made from 12mm PET containing 75% recycled plastic bottles.

Class D rated to assist with sound absorption and help reduce room echo.

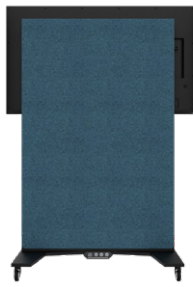
Magnetic fixings allow quick access to concealed hardware and are available in a range of colours.



Rear panels in a variety of options:



No Covers



Rear Covers

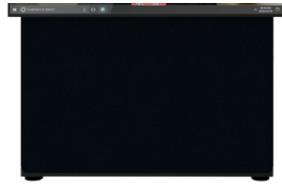


Whiteboard

Cover Colour Options



1. Charcoal grey (Standard)



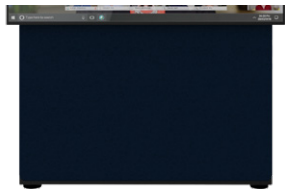
2. Black



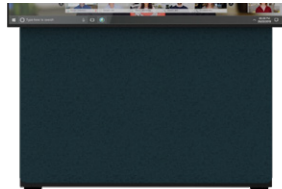
3. White



4. Sage



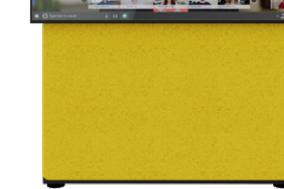
4. Nocturn



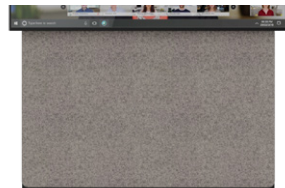
5. Eden



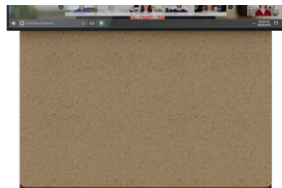
6. Slate



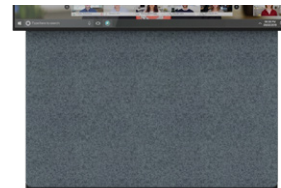
7. Yellow



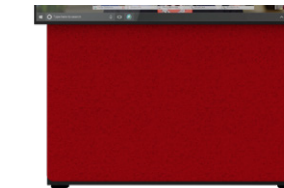
7. Natura



8. Sand



9. Misty Dew



10. Red



11. Neptune



12. Clouds



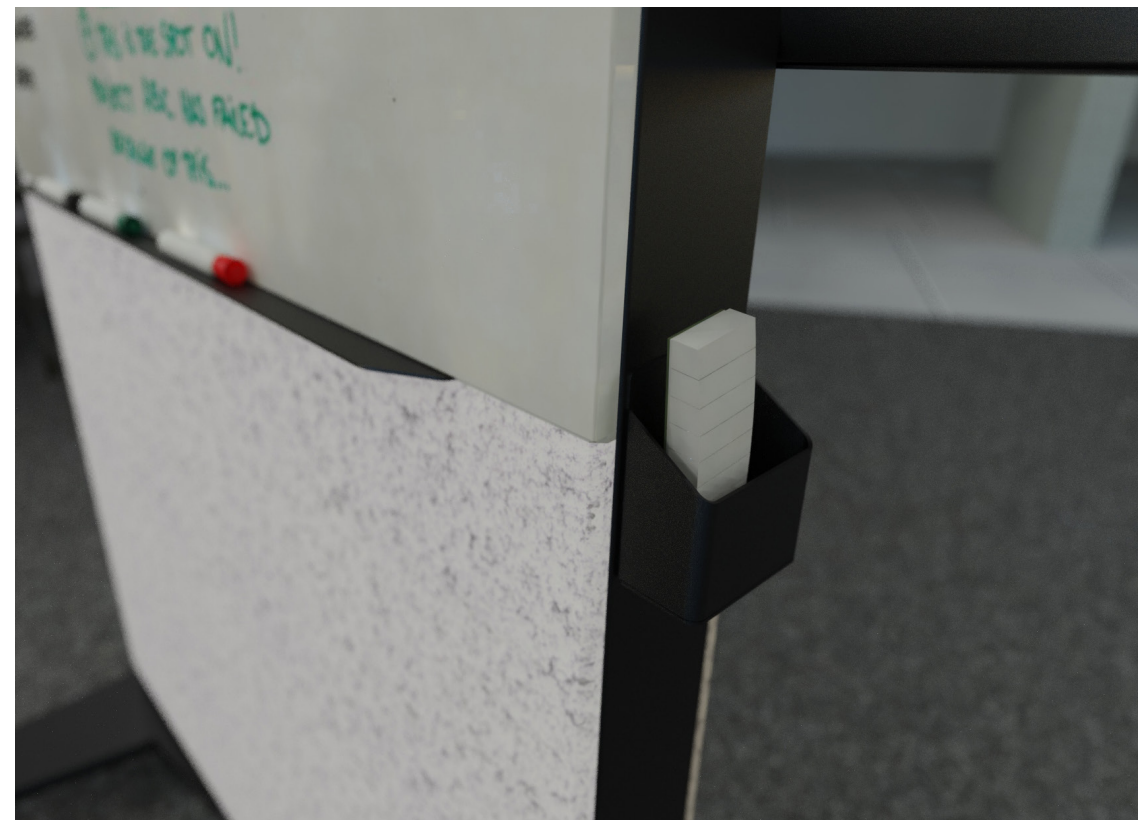
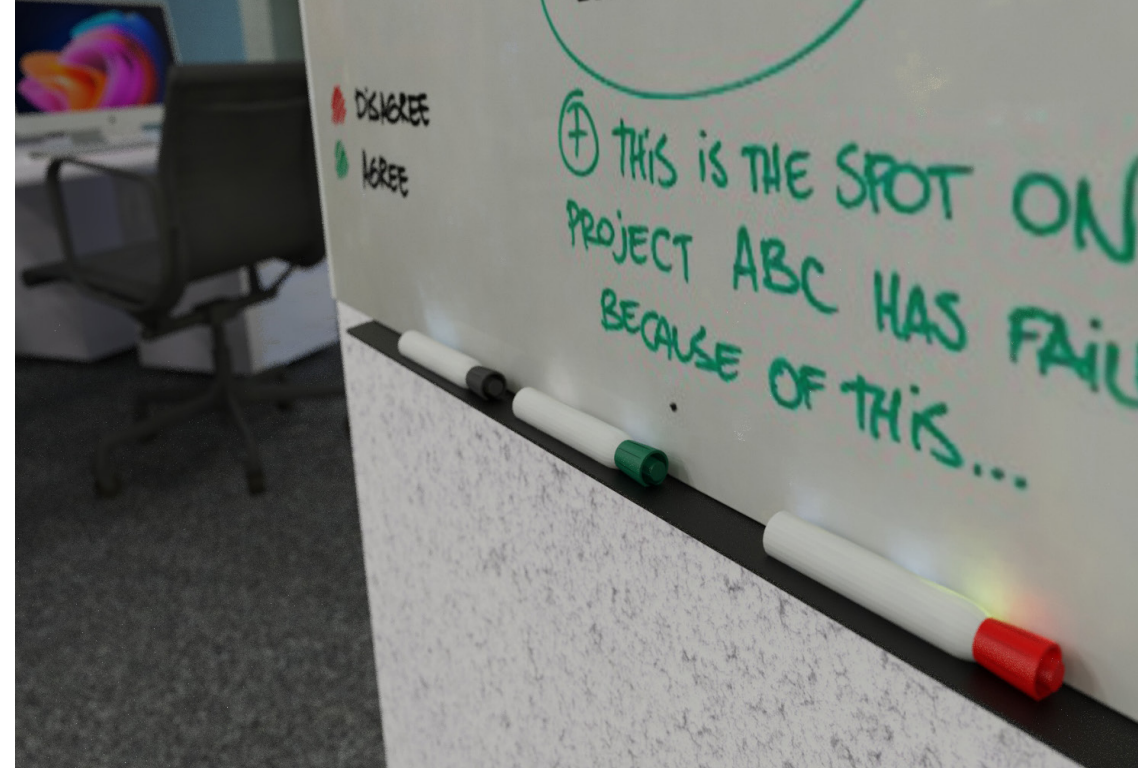
13. Oyster

Optional Whiteboard



Make full use of the Display Mount back panel with the optional white board.

Customise further with optional acoustic foam backing.





Line up



Mobile - Single Display



ABM One55



ABM One65



ABM One75



ABM One86



ABM One98



ABM One105

Mobile - Dual Display



ABM Two55



ABM Two65



Ashton Bentley
23 Schooner Court
Crossways Business Park
Dartford
DA2 6NW
United Kingdom

t: +44 (0)207 100 1200
e: ab_spaces@kramerav.com
w: www.ashtonbentley.com

Ashton Bentley started 15 years ago with a small group of like-minded people who believed meeting room AV could, and should, be simpler.

What once felt like a bold idea is now becoming the norm, with industry heavy weights endorsing and promoting our (we are not biased) excellent products!

It hasn't always been a smooth ride, but it's been a fun one—and it turns out we weren't as mad as we first thought.

Much more to come!